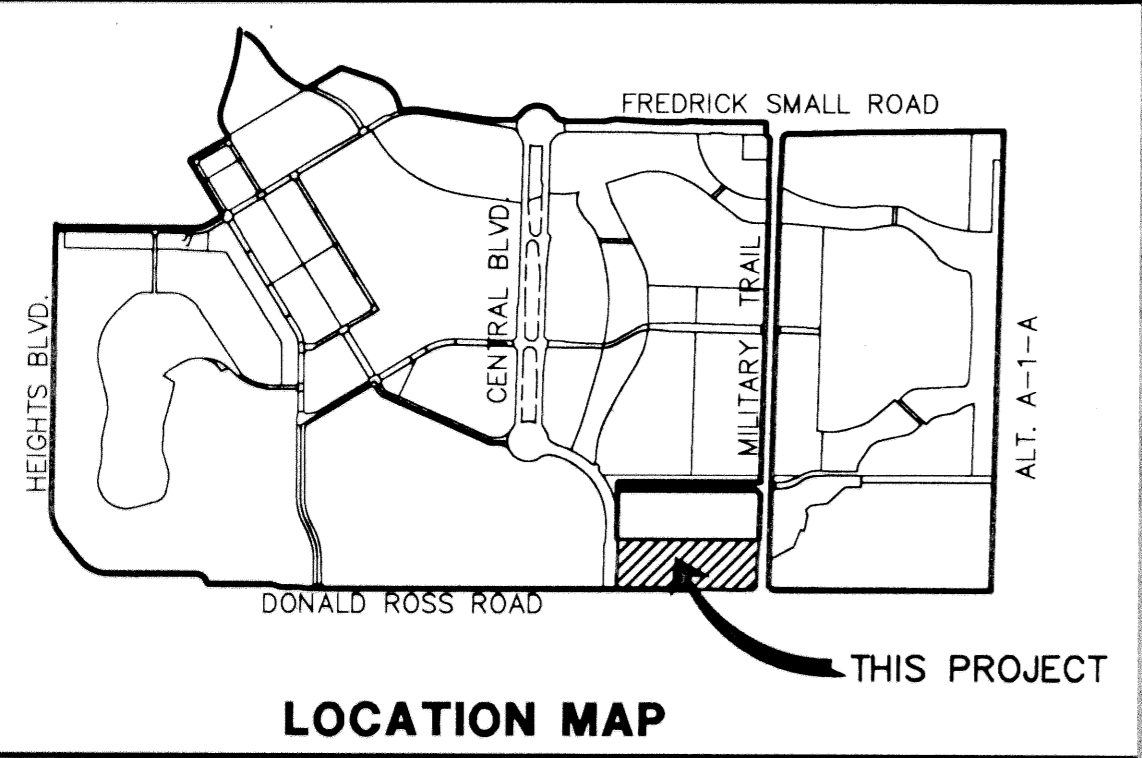


ABACOA PLAZA

A REPLAT OF ALL OF TRACT CC1 OF ABACOA PLAT NO. 1 AS RECORDED IN PLAT BOOK 78, PAGES 145 THROUGH 163, INCLUSIVE LYING IN SECTION 24, TOWNSHIP 41 SOUTH, RANGE 42 EAST, TOWN OF JUPITER, PALM BEACH COUNTY, FLORIDA

THIS INSTRUMENT PREPARED BY JAMES E. PARK, P.L.S.
 WILLIAMS, HATFIELD & STONER, INC. - ENGINEERS PLANNERS SURVEYORS
 1901 SOUTH CONGRESS AVENUE, SUITE 150, BOYNTON BEACH, FLORIDA 33426
 MAY, 1998

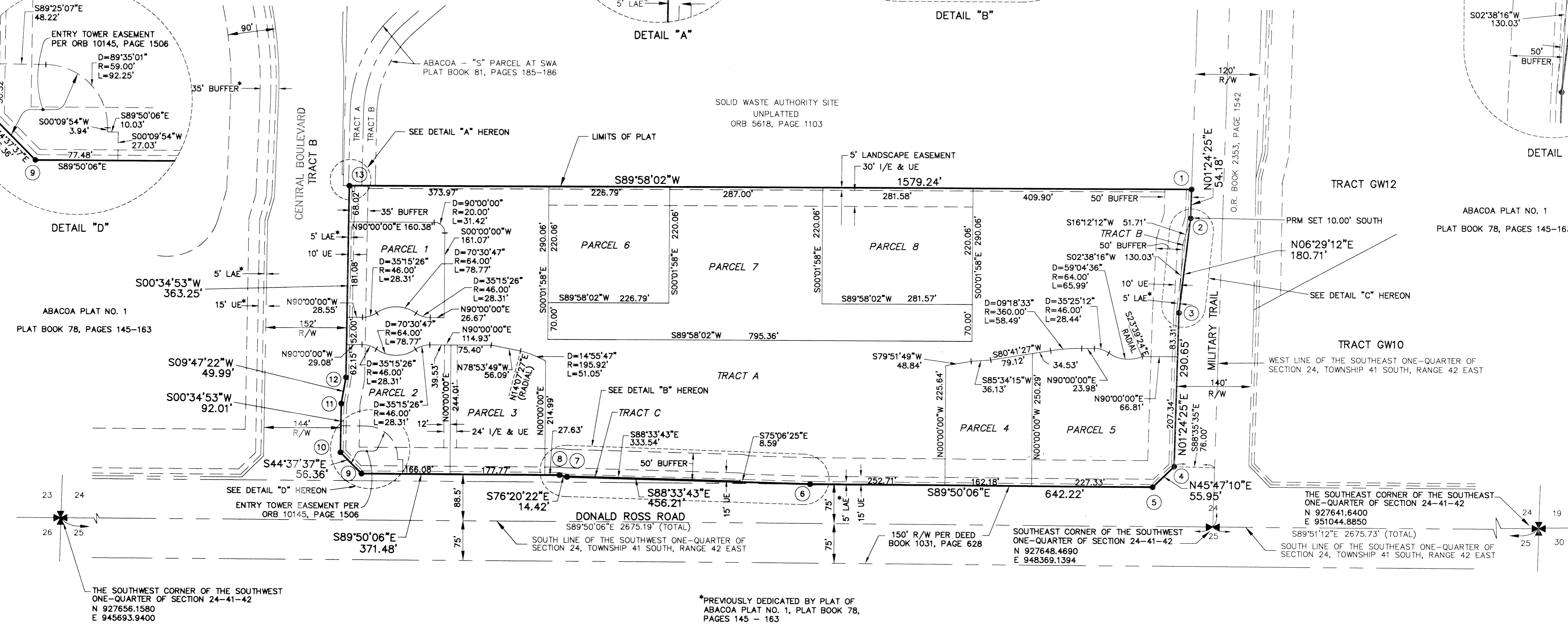
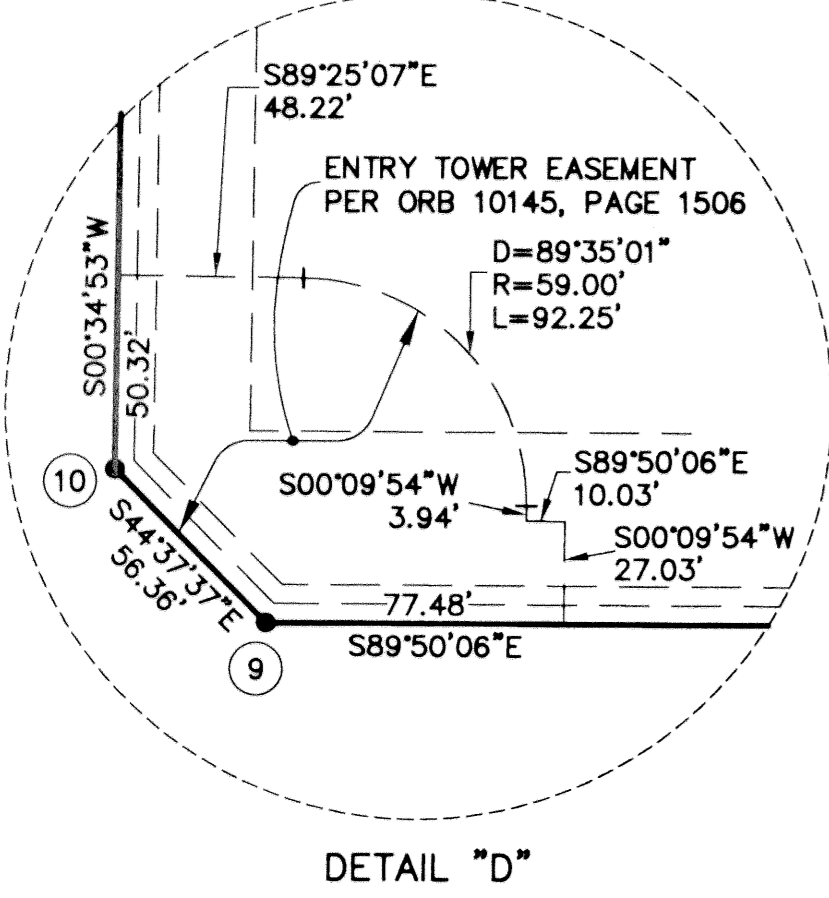
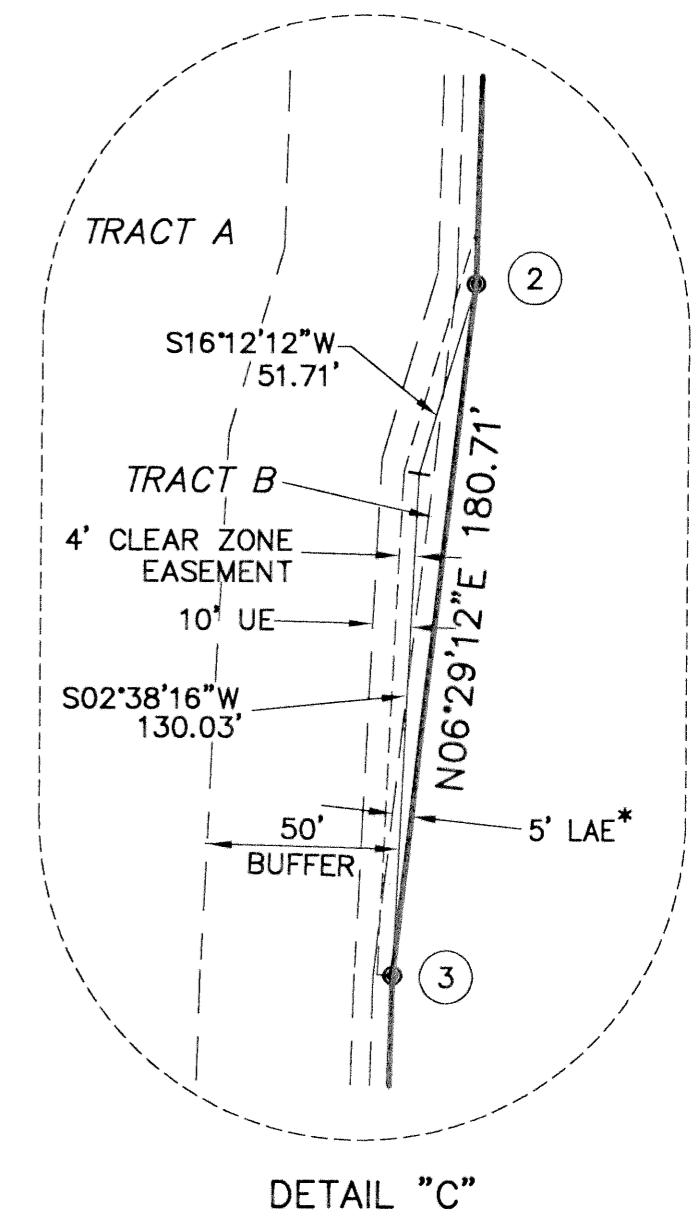
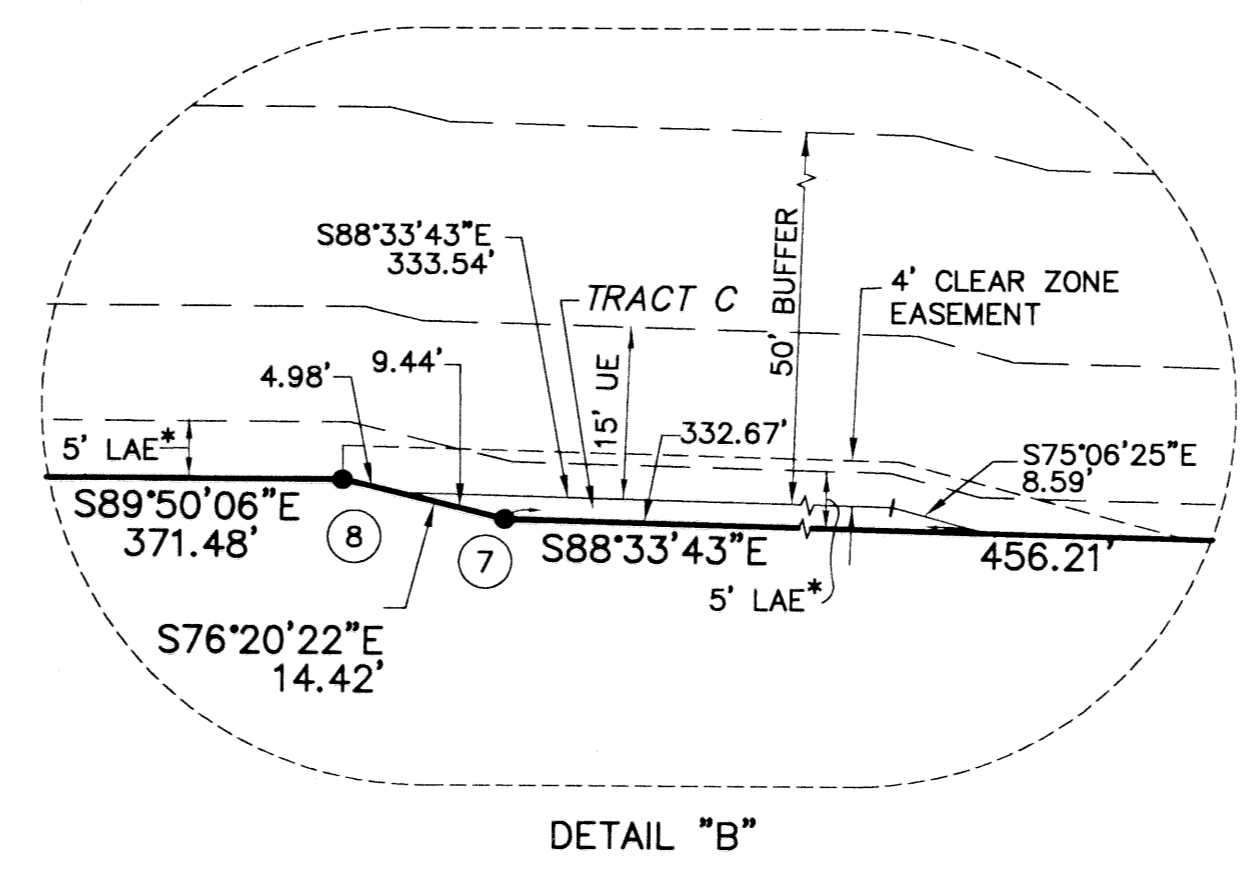
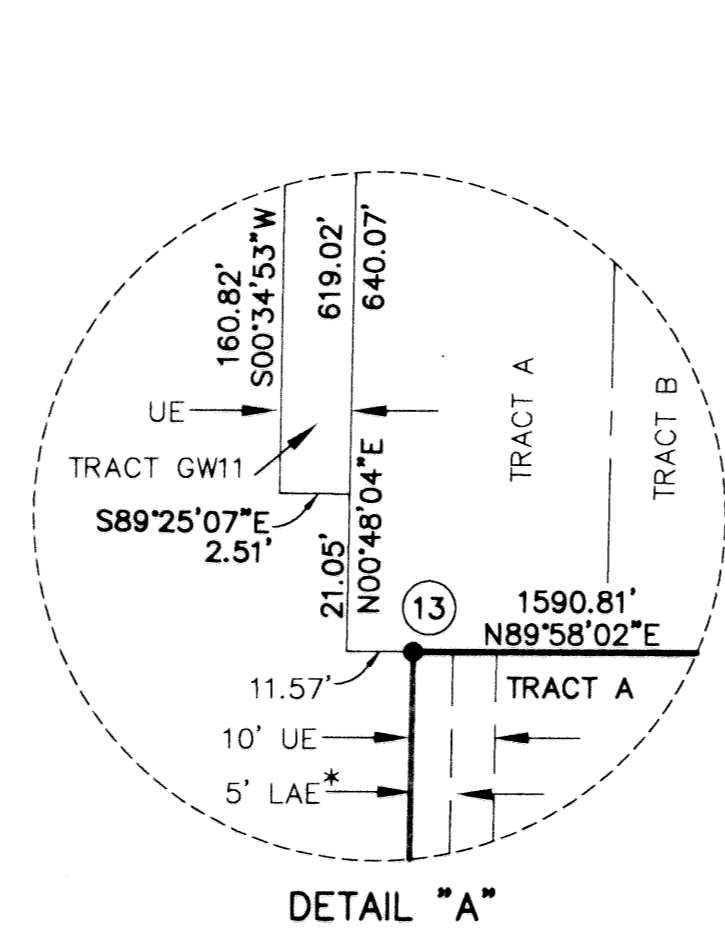
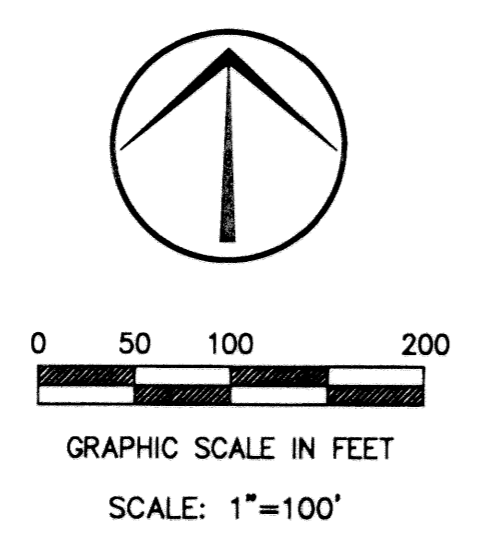
SHEET 2 OF 2



FOR THE USE OF NORTHERN PALM BEACH COUNTY IMPROVEMENT DISTRICT

NAME	ACREAGE	LAND USE CLASSIFICATION	GROSS ACREAGE
PARCEL 1	0.72	COZ	0.72
PARCEL 2	1.08	COZ	1.08
PARCEL 3	0.97	COZ	0.97
PARCEL 4	0.88	COZ	0.88
PARCEL 5	1.54	COZ	1.54
PARCEL 6	1.14	COZ	1.14
PARCEL 7	2.73	COZ	2.73
PARCEL 8	1.42	COZ	1.42
TRACT A	9.41	EXZ	9.41
TRACT B	0.02	EXZ	0.02
TRACT C	0.02	EXZ	0.02

NORTHERN PALM BEACH COUNTY LAND USE CLASSIFICATION CODE
 "COZ" DENOTES COMMERCIAL AND "EXZ" DENOTES EXEMPT ACREAGE.



SUBDIVISION * PLAT BOOK 78, PAGE 145-163
 FLOOD MAP * -
 ZONING -
 ZIP CODE -
 TOWN OF JUPITER
 PLAT NAME -
 G/TW/26-C-VF/4088-PLAT/08/10/98

*PREVIOUSLY DEDICATED BY PLAT OF ABACOA PLAT NO. 1, PLAT BOOK 78, PAGES 145 - 163